

M.I.C.M. - C.N.I.A.R.  
INTREPRINDEREA DE CONSTRUCTII AERONAUTICE  
2200 B R A S O V

MANDATORY SERVICE BULLETIN

IS-28M2/E0-13

APPROVED BY : Department of Civil Aviation  
with no.16511/24.11.1984

PRODUCT : IS-28M2 and IS-28M2A Motorglider

OBJECT : Replacement of rudder bar axle fixing rivet

COMPLIANCE : Modification card no.250/31



## 1. PLANNING INFORMATION

### A. Aplicability

The modification shall be applied to the IS-28M2 and IS-28M2A motor-glider with serial number up to 30 inclusively, within 15 days from the bulletin receiving.

### B. Reason

Reliability increase.

### C. Description

To the motorgliders mentioned at 1A section, an inspection shall be carried out for verifying if no clearance appeared at the rudder pedal axle, (left and right), at the upper end of the vertical arm. If a clearance is detected the fixing rivet shall be replaced by an M4x10 screw. If no clearance is detected the replacement shall be done at the next overhaul.

### D. Compliance

Modification card no.250/31.

### E. Accomplishment

This bulletin shall be applied by the users of the motorgliders mentioned in 1A section.

### F. Material-Cost and Availability

The cost of necessary materials will be supported by the Buyer.

Materials: One M4x0.7 screw, made of steel with resistance

$\sigma_R \geq 42 \text{ daN/mm}^2$  ( $F_{tu} \geq 60 \text{ Ksi}$ ); The length of the screw = 10 mm (1/2.5 in).

### G. Tooling

- Drilling machine
- One  $\emptyset 4$  (4 mm diameter) drill ;
- One  $\emptyset 3.2$  drill ;
- One M4x0.7 tap screw ;
- Motorglider tools kit.

### H. Weight and balance

Not affected.



### I. References

See the enclosed explanatory sketches (Appendix no.1 and 2) and the Flight and Maintenance Manual of the motorglider.

### J. Documents affected

None.

## 2. ACCOMPLISHMENT INSTRUCTIONS

### A. Work preparation

Precautions must be made to avoid any remaining object (either tools or materials) under the floor.

### B. Application

If according to the "C" section it is necessary to replace the rivets proceed as follows :

- Remove the rudder control cables from the rudder pedals (1 position in drawing of Appendix no.1) ;
- Dismount the brake rods by splints and screws removing (position 4) ;
- Dismount the springs (position 3) ;
- Unscrew the rudder pedals plate fixing screws in the floor ;
- Take the plate together with the two rudder pedals assemblies out of the cabin ;
- Remove the rivets from the rudder pedals axles (position 2) ;
- The rivets removal can be done either by drilling with a 4 mm dia. drill, until the button head of the rivet is cut off, or by cutting the rivet head by means of a chisel ;
- Adjust the remaining hole with a 3.2 dia drill ;
- Cut a thread in the hole, with a M4x0.7 tap screw;
- Mount the M4x0.7 screw, length of the screw = 10 mm (1/2.5 in) (1<sup>st</sup> position in Appendix no.2).

After assembling the four screws, introduce the rudder pedals into the cabin and assemble.

ATTENTION ! Do not use the old cotter pins for securing the braking cables and rods.



After the rudder pedals assembling, rudder and brake positions must be adjusted, according to the Flight and Maintenance Manual of the motor glider.

C. Using instructions

In accordance with the Flight and Maintenance Manual.

3. MATERIAL INDICATIONS

A. Material list

- M4x0.7x10 screw, material specified at "1F" section.
- Safety pins.

B. Tools list

The necessary tools are specified in "1G" section.

C. Supply indications

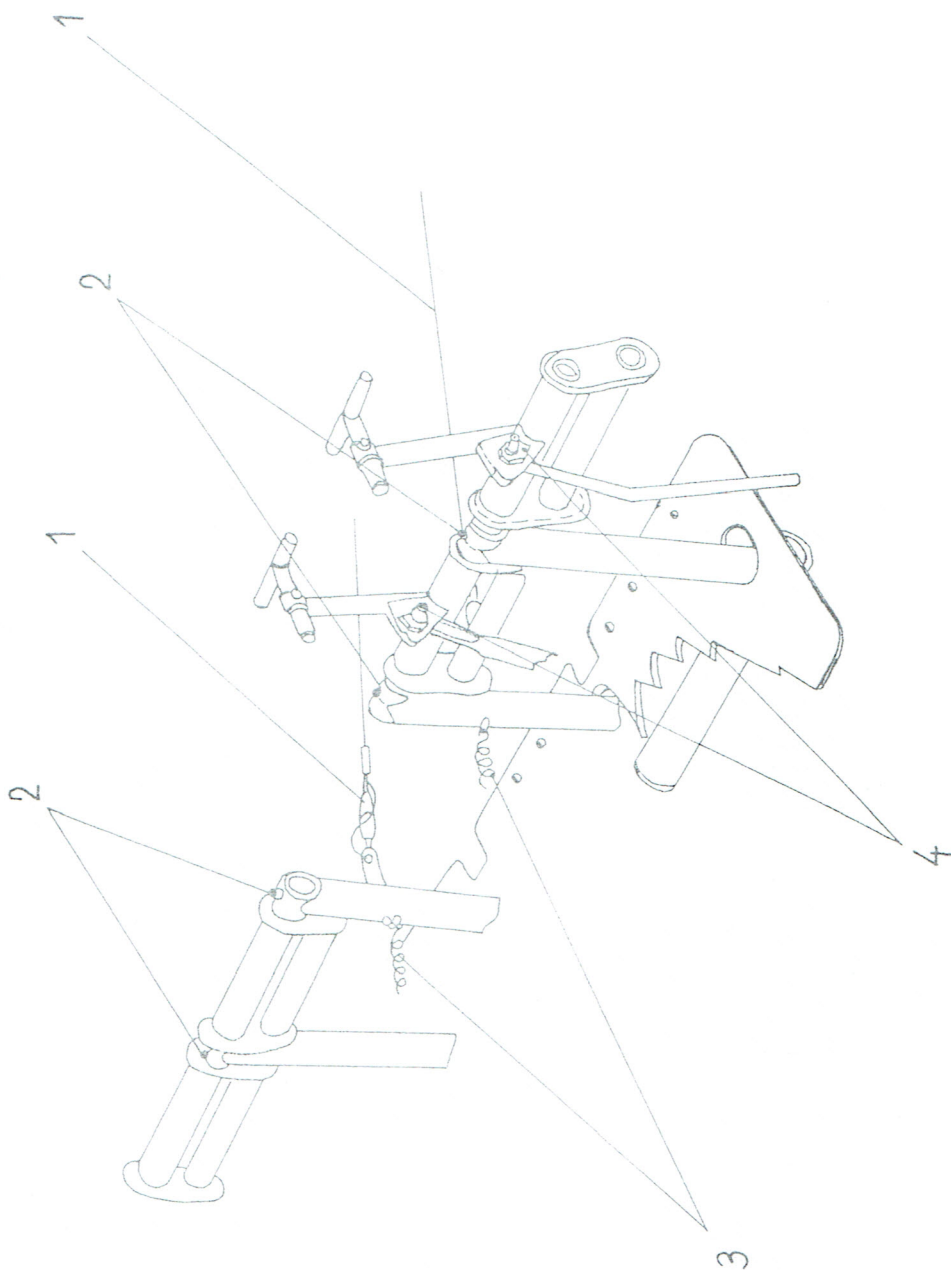
According to the authorised workshop possibilities.

4. IDENTIFICATION

The bulletin application shall be mentioned in the motorglider log book.

5. APPENDICES

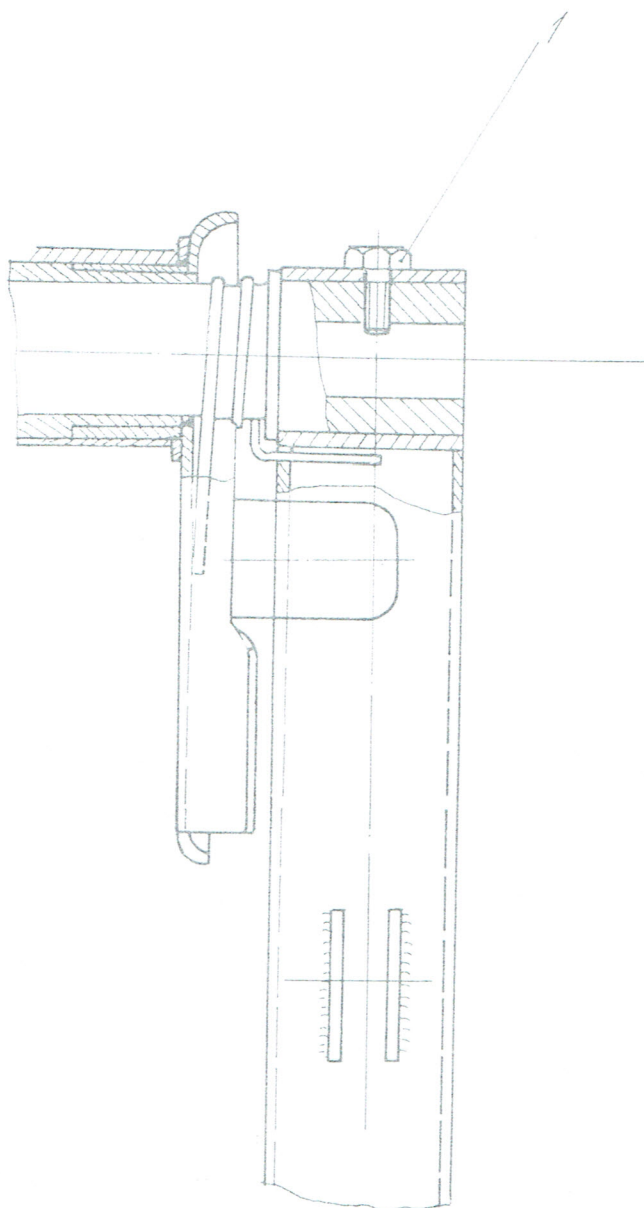
Two explanatory sketches.



Data: 07. 11. 1984

IS 28 M2 /E0-13

Anexo 1



Data : 07.11.1984

IS-28M2/EO-13

ANEXA 2

APPENDIX