	Service Information Letter	Doc.-No.: SIL- AR-01
		Revision: 01
		Date: 06.11.2018
EASA AP439		Page 1 of 4

SIL Service Information Letter

Data: 06.11.2018

Subject: Joint Qucik Connectors (L'Hotellier ball and swivel) installed on gliders and sailplanes

Models Affected: IS 28B2 - all serial numbers

IS 29D/D2 - all serial numbers

IS 32 - all serial numbers

Time of compliance: Before next flight


Aeroclubul Romaniei is Type Certificate holder for this type of gliders. This SIL include important flight and safety information for IS sailplanes.

It has been reported by the user, that during exploitation of one IS 28B2 sailplane the ball joint (rotule) from joint quick connector of the flap command chain had broken immediatly after landing (**see fig.1**). The glider landed safely.

For safety reasons and to eliminate future failures strongly suggest to implement the following actions:

For all gliders type IS 28B2 (Twin Lark), IS 29D2 (Lark) and IS 32 with L'Hotellier ball and swivel joint quick connectors, **BEFORE NEXT FLIGHT:**

1. Unmount the fairing/cover between the wings (**see fig.2** for IS 28B2 example)
2. Check all L'Hotellier ball and swivel joint as described in L'Hotellier document "Instruction for the maintenance of L'Hotellier ball and swivel joints"
REF IMA10.001 Rev.F 10.03.2009.
3. Unmount all ball joints from the pieces in which is screwed in and check the ball using a x10 magnifier for cracks, ruptures, corrosion and general state giving special attention under ball and where the screw thread ends. (**see fig.3**)
In case of uncertainty, use other NDT methods.
No thread damage is acceptable.
In case of cracks, ruptures, corrosion and poor general state, replace the piece.

	Service Information Letter	Doc.-No.: SIL- AR-01
		Revision: 01
		Date: 06.11.2018
EASA AP439		Page 2 of 4

4. Reassembly the ball perfectly set on its base. Fix the ball in position with an adequate locking device.
5. Mount the fairing/cover between the wings according to the Flight and Maintenance Manual.
6. Before first flight of every day, perform a positive check for the flight controls that use L'Hotellier ball and swivel joints, according to EASA SIB 2012-04.

Reference:

1. Instructions for the maintenance of L'Hotellier ball and swivel joints REF IMA10.001 Rev.F 10.03.2009
2. EASA SIB 2012-04 March 2012

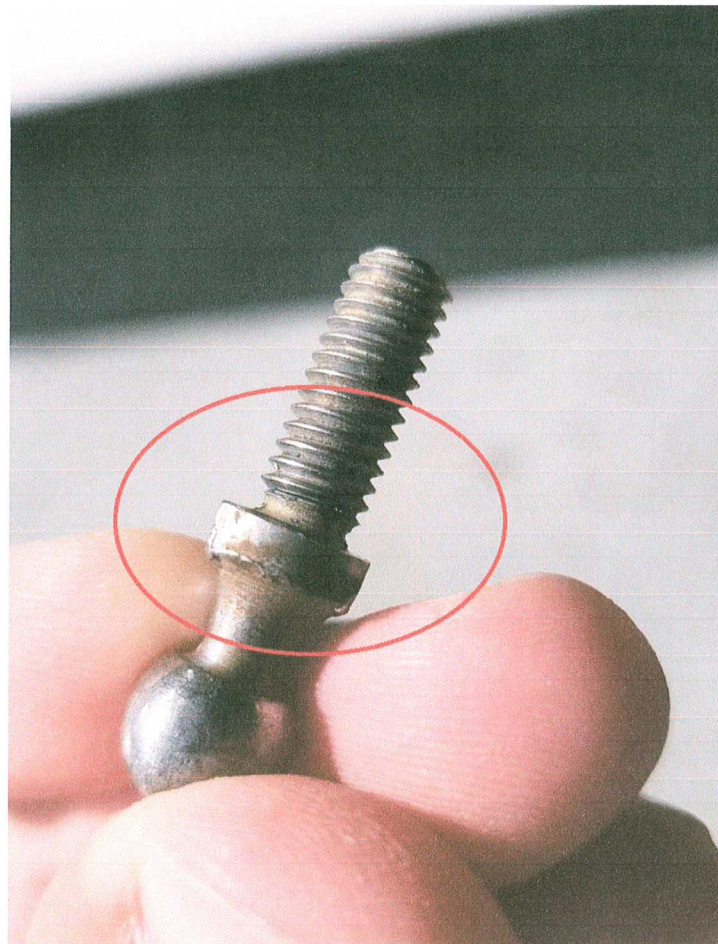



Fig. 1

	Service Information Letter	Doc.-No.: SIL- AR-01
		Revision: 01
		Date: 06.11.2018
EASA AP439		Page 3 of 4

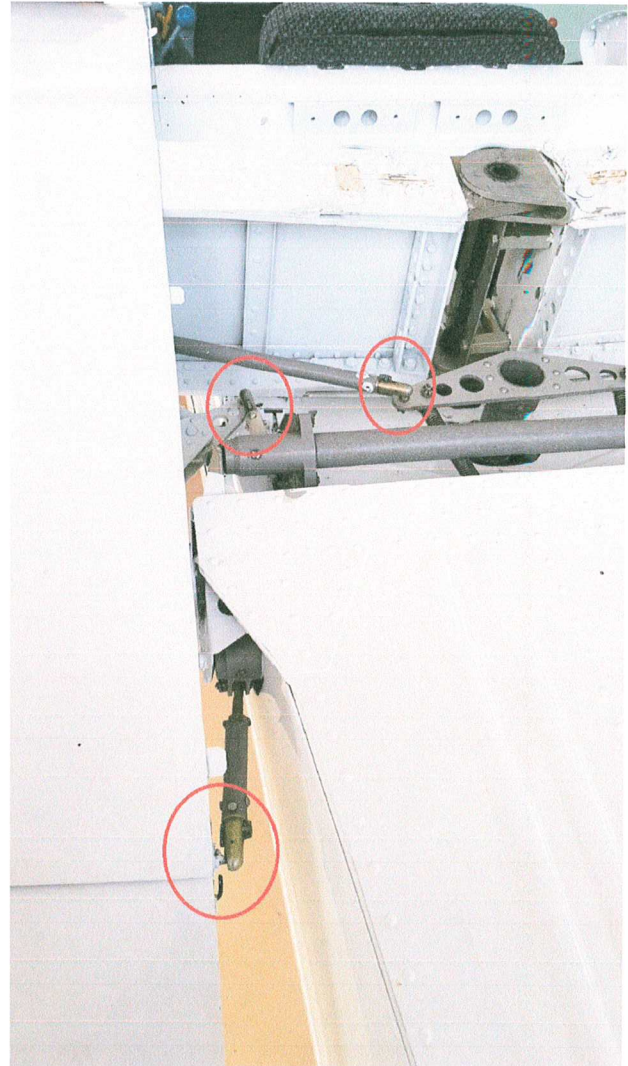



Fig. 2 (for IS 28B2 example)

	Service Information Letter	Doc.-No.: SIL- AR-01
		Revision: 01
		Date: 06. <u>11</u> .2018
EASA AP439		Page 4 of 4

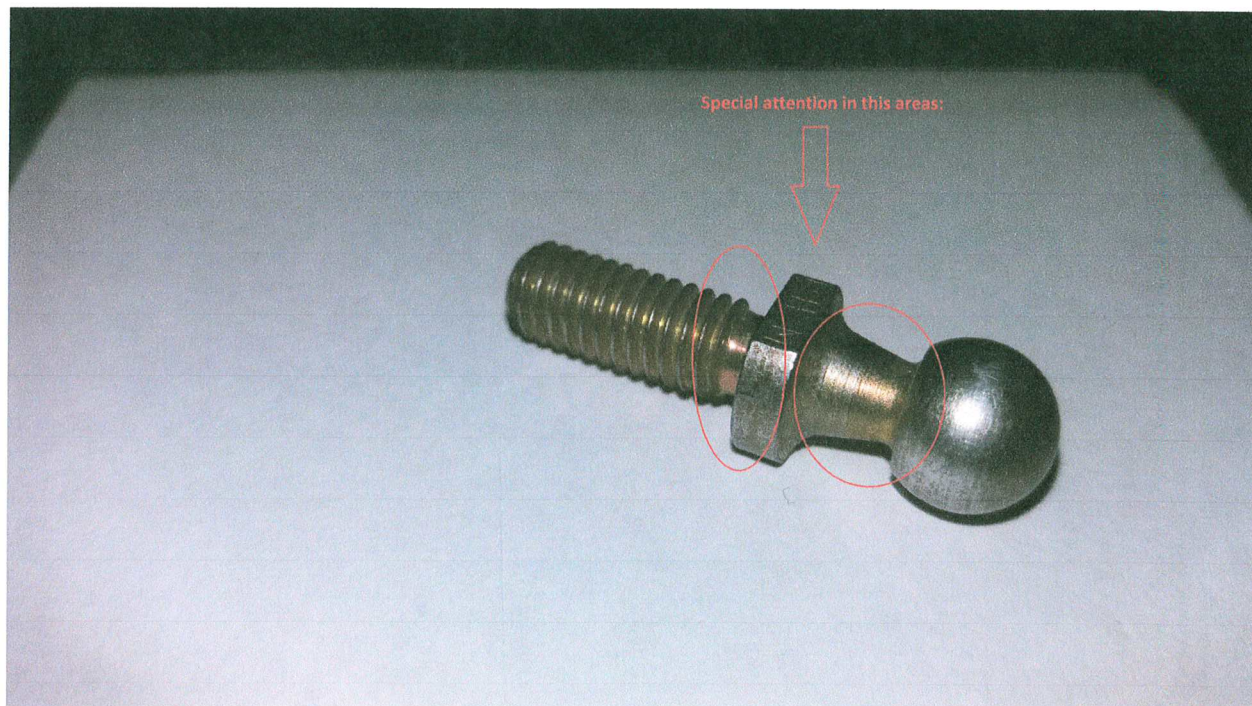


Fig 3